

Vertex Lifts
Open your doors towards a new era



Vertex Lifts Ltd.



Open your doors towards a new era

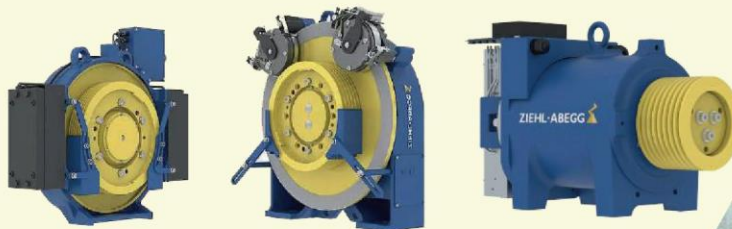
Vertex Lifts Ltd. was founded in 2002 with a vision to introduce contemporary and sophisticated technologies to fulfill the domestic requirements of Bangladesh. Since then we are highly committed to implement technological innovation for our clients and fulfilled the demands of new generations.

As an established company we are providing reliable, efficient, comfortable and sustainable solutions for Elevators and Escalators in the industrialized cities and developing countryside. For us every project is an opportunity to learn, to figure out problems and challenges, to invent and reinvent.

So far, the comprehensive strength of the Company has been ranked among the top company in the industry for many years. We have successfully supplied and installed more than five thousands of Elevators and Escalators all over Bangladesh.

Ready Stock Motor

Vertex is the sole agent for ZIEHL-ABEGG. Made in Germany World's No. 1 Gearless Machine



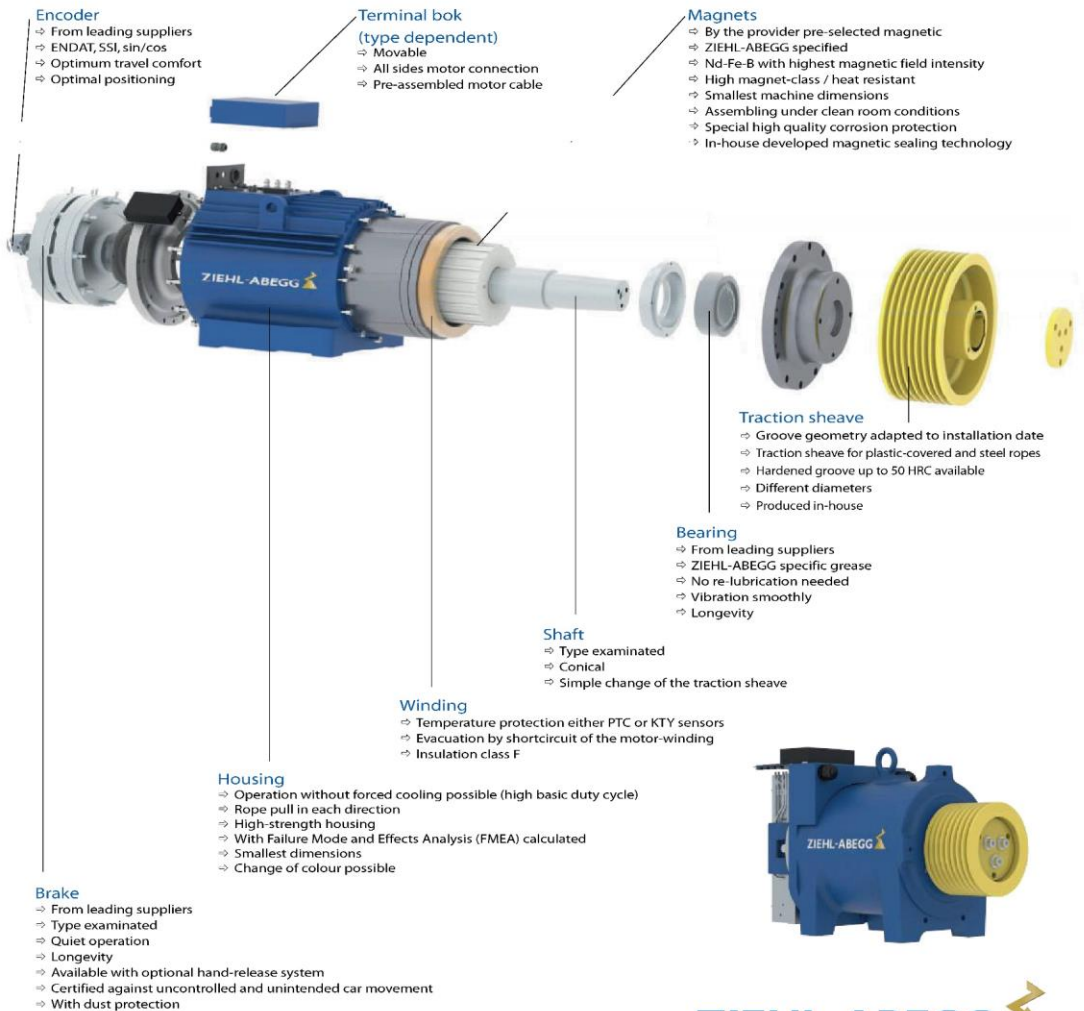
Our Own Ready Stock Brand With German Technology



ZIEHL-ABEGG gearless machines

- ⇒ 100,000 Machines worldwide in operation
- ⇒ Long lasting experience in synchronous technology - since 1993
- ⇒ Suitable for machine-room-less as well as machine-room installation

- ⇒ Large spectrum of machines for different loads
- ⇒ Simple to install
- ⇒ Safe calculation with ZIEHL-ABEGG ZALift software
- ⇒ Short delivery time of the machines



TORINDRIVE
通 润 驱 动

Company Introduction

Torin Drive is a professional manufacturer of traction machines, efficient PM motors and other elevator components. It started to serve the elevator industry from 1985, and devoted to push the innovation of traction machine technology. It has become the pioneer and global leader in the field. It is responsible for drafting National Standard of Elevator Traction Machine

As a Key High-tech Enterprise of China Torch Program, Torin Drive owns the core technologies such as PM motor and high-efficient transmission. It has a full range of products with more than 80 specifications and 800 types, including PM synchronous gearless traction machine, worm gear traction machine, escalator traction machine and other elevator components, which meet the standards of Asia, Europe, North America and the customer specific requirements.

Each day, more than 1.5 million traction machines produced by Torin Drive are running simultaneously in the buildings throughout the globe.

We strive for a more outstanding high- end equipment group with the intention of providing the customers with high-quality products, customized solutions, all-round services, comfortable experience and value enhancement that continually exceed expectations.





ELEVATOR MACHINE



DOOR-MOTOR SYSTEM

The vvvf full digital frequency conversion door machine automatically decelerates in the post-closing stage, and the speed regulation is smooth and precise, which makes the switch door smoother and quieter.

SINCE 1970

We aim to deliver to all of our customers, all over the world, the same distinguishing quality of the Motanari Giulio brand. A name you can trust without reservation.



CONTROL SYSTEM

The new control system integrates logic, safety, drive, power supply and other loop control, and has superior anti-interference ability and software and hardware fault-tolerant desing to prevent accidents.



PASSENGER ELEVATOR CABIN

vevex Lifts
Open your doors towards a new era



VLL-C 01



VLL-C 02



VLL-C 03



VLL-C 04

PASSENGER ELEVATOR CABIN



VLL-C 05



VLL-C 06



VLL-C 07



VLL-C 08

PASSENGER ELEVATOR CABIN

VEVEX LITE
Open your doors towards a new era



VLL-C 09



VLL-C 10



VLL-C 11



VLL-C 12

PASSENGER ELEVATOR CABIN



VLL-C 13



VLL-C 14



VLL-C 15



VLL-C 16

PASSENGER ELEVATOR CABIN

veylex Lifts
Open your doors towards a new era



VLL-C 17



VLL-C 18



VLL-C 19



VLL-C 20

PASSENGER ELEVATOR-DOOR



VLL-D 01



VLL-D 02



VLL-D 03



VLL-D 04



VLL-D 05



VLL-D 06

PASSENGER ELEVATOR-DOOR



VLL-D 07



VLL-D 08



VLL-D 09



VLL-D 10



VLL-D 11



VLL-D 12

PASSENGER ELEVATOR-DOOR



VLL-D 13



VLL-D 14



VLL-D 15



VLL-D 16

PASSENGER ELEVATOR-CEILING

Vertex
Ltd.
Open your doors towards a new era



VLL-FC 01



VLL-FC 02



VLL-FC 03



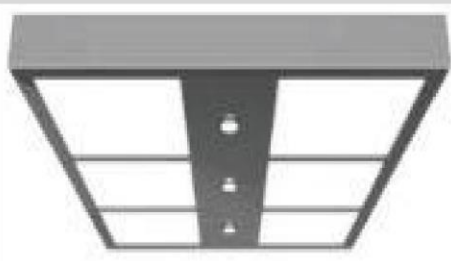
VLL-FC 04



VLL-FC 05



VLL-FC 06



VLL-FC 07

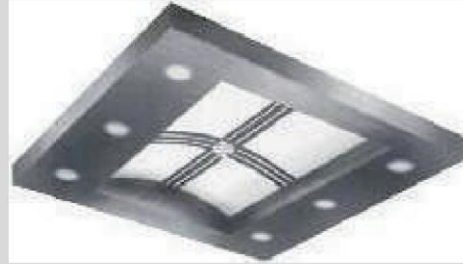


VLL-FC 08

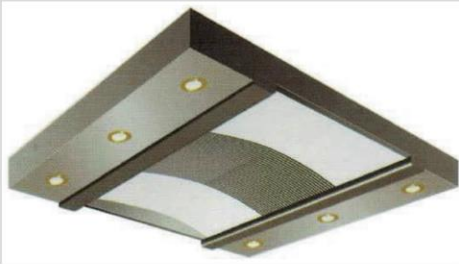
PASSENGER ELEVATOR-CEILING



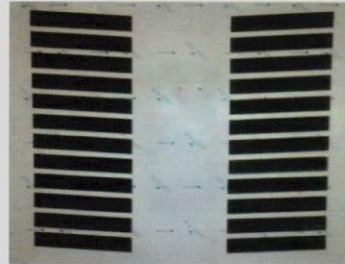
VLL-FC 09



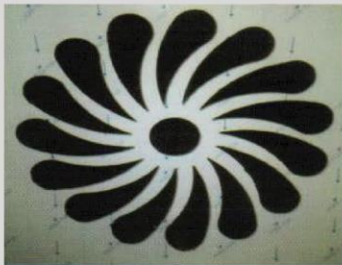
VLL-FC 10



VLL-FC 11



VLL-FC 12



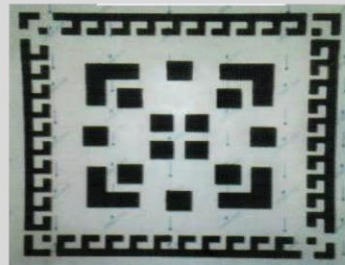
VLL-FC 13



VLL-FC 14

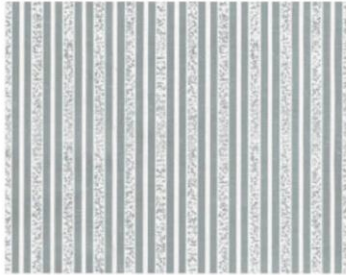


VLL-FC 15

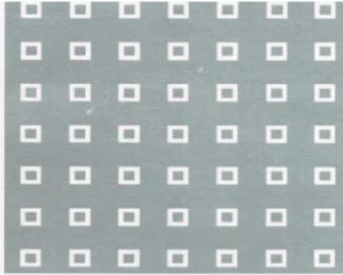


VLL-FC 16

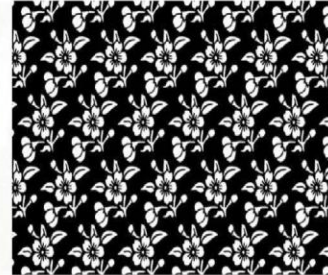
Stainless Steel Etched Pattern For Cabin & Door



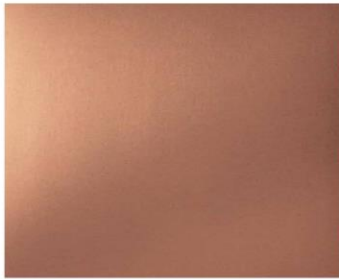
VLL- 01



VLL- 02



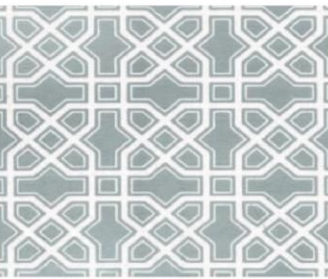
VLL- 03



VLL- 04



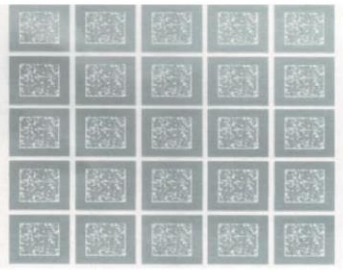
VLL- 05



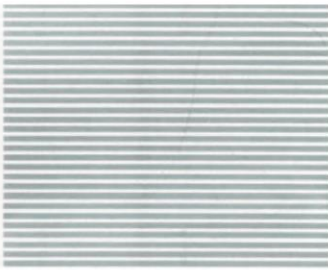
VLL- 06



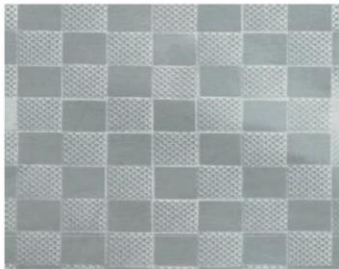
VLL- 07



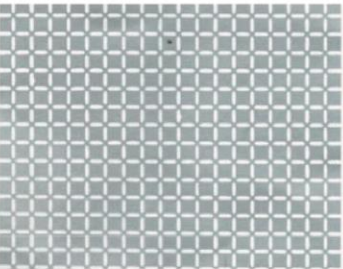
VLL- 08



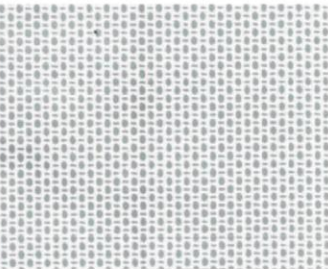
VLL- 09



VLL- 10



VLL- 11



VLL- 12



SCISSOR TYPE CAR LIFT



RAIL TYPE CARGO LIFT



CARGO LIFT



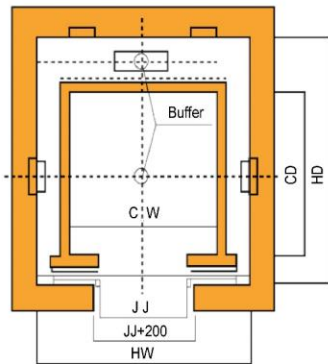
VLL-025

VLL-026

VLL-027

OBSERVATION ELEVATOR CABIN

Car Lift



Plan Layout of Hoishway



Hospital Bed Lift

Main Parameters

Persons	Capacity kg.	Car Size CW x CD mm	Speed m/s	Door Size JJ x HH mm	Hoistway internal dimension			Slab Load Tons
					HW x HD mm	Overhead	Pitdepth	
4	320	1100 x 850	0.5 / 1.0	700 x 2100	1500 x 1450	4200	1500	6
6	450	1300 x 950	1.0 / 1.5 / 1.75	800 x 2100	1750 x 1600	4200	1500	8
8	630	1400 x 1100	1.0 / 1.5 / 1.75	800 x 2100	1900 x 1650	4000	1500	10
11	800	1350 x 1400	1.0 / 1.5 / 1.75	800 x 2100	1900 x 2200	4200	1500	12
15	1000	1600 x 1550	1.0 / 1.5 / 1.75 / 2.0	900 x 2100	2150 x 2150	4200	1500	16
17	1150	1800 x 1500	1.0 / 1.5 / 1.75 / 2.0	900 x 2100	2400 x 2100	4200	1500	18
20	1350	1800 x 1600	1 / 1.5 / 1.75 / 2.0 / 2.2	1000 x 2100	2400 x 2400	4200	1500	20
24	1650	2000 x 1800	1.5 / 1.75 / 2.0 / 2.5	1000 x 2100	2600 x 2500	4400	1800	30

CAR AND LANDING OPERATION PANEL AND INDICATION

Floor Display



VLL-HX01
Dot matrix display



VLL-HX02
Liquid crystal display



VLL-C01



VLL-C02



VLL-C03

(Standard)



Display Optional



Dot matrix
red light



White
on black



Blue
and white

Display Screen



Blue Screen
Optional



True Color
Optional



Multi-media
Optional

Button Optional



VLL-A001



VLL-A002



VLL-A003

ESCALATOR

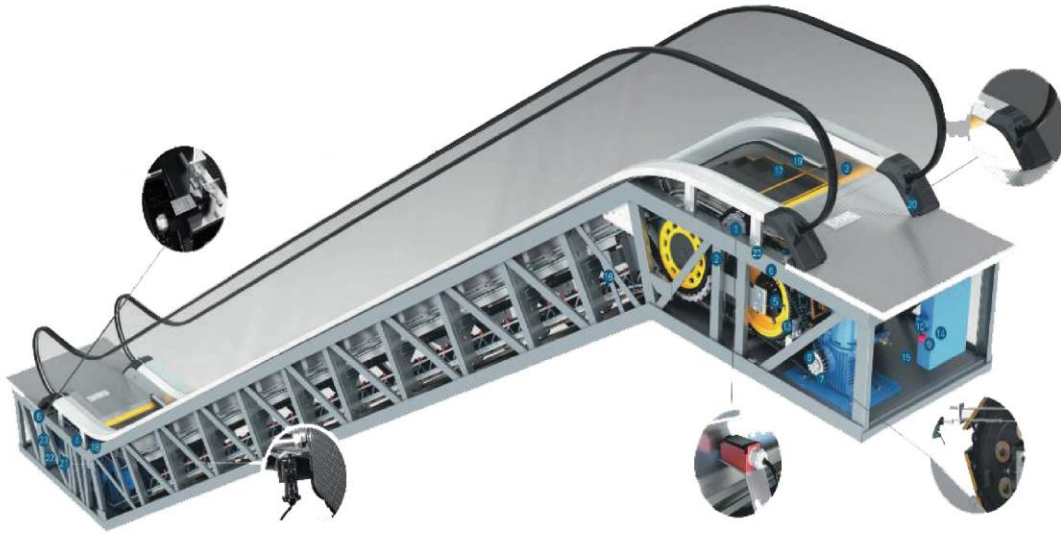
VELEX
Open your doors towards a new era



Moving Walk Way



ESCALATOR SAFETY DEVICE



Function	Description of functions
1. Lack of phase, error phase protection	If lack of phase or error phase has been checked out, the escalator (moving walkway) will automatically stop the operation.
2. Motor over-load protection	When the current exceeds 15% of the current rating, the escalator will automatically stop the operation.
3. Electrical appliance loop protection	It offers the automatic circuit disconnecting device to protect the circuit and main components of the escalator (moving walkway).
4. Handrail inlet protection	When some foreign substance has been clipped in the handrail inlet, the escalator (moving walkway) will automatically stop the operation.
5. Comb plate safety device	When some foreign substance has been clipped in or between the combs, the escalator (moving walkway) will automatically stop the operation.
6. Step sagging protection device	When there is subnormal step bending, the escalator (moving walkway) will stop the operation before the step entering into the comb plate.
7. Broken drive-chain safety device	When the drive-chain has been over-stretched or it is broken, the escalator (moving walkway) will automatically stop the operation.
8. Broken step chain protection	When the step (plate) chain has been over-stretched or it is broken, the escalator (moving walkway) will automatically stop the operation.
9. Over-speed protection	When there is over-speed to the escalator (moving walkway), it will automatically stop the operation.
10. Direction reversal protection	When it comes the unintentional reversal of the direction of travel, the escalator (moving walkway) will automatically stop the operation.
11. Security line	The yellow synthetic resin security line is located in the front position and two sides of the escalator tread so that the passengers will not tread in-between the edge of the adjacent step and the lift group lengthened skirt panel. The security line both on sides of the step is higher than the tread surface. (The moving walkway offers the selective yellow spray-painted security line.)

SMALL MACHINE ROOM PASSENGER ELEVATOR



MACHINE ROOMLESS PASSENGER ELEVATOR

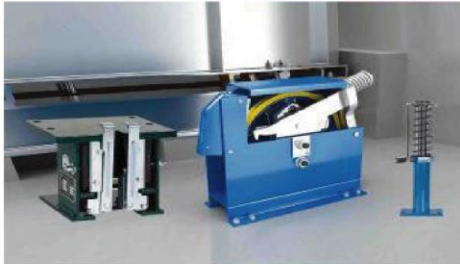


Machine room elevator parameter list

Rated capacity		Rated speed m/s	Car size		Net door size				Net hoistway size				Machine room			
Kg	Persons		CA	CB	M	HH	AH	BH	PP	CH	AM	BM	MH	PH	CM	
450	6	1.0	1200	1100	700	2100	1900	1700	1500	4200	1900	1700	2200			
		1.75							1700	4500						
630	8	1.0	1300	1200	800	2100	2000	1800	1500	4200	2000	1800	2200			
		1.75							1700	4500						
800	10	1.0	1350	1350	800	2100	2000	2000	1500	4200						
		1.75							1700	4500						
		2.0							1800	4900	2000	2000	2200			
		2.5							2200	5000						
1000	13	1.0	1600	1400	900	2100	2200	2200	1500	4200						
		1.75							1700	4500	2200	2200	2200			
		2.0							1800	4900						
		2.5							2200	5000						
1150	15	1.0	1700	1500	900	2100	2300	2150	1700	4500	2300	2150	2200			
		1.75							1700	4500						
		2.0							2200	5000						
		2.5							1900	4300						
1350	18	1.0	1900	1600	1100	2100	2500	2300	1700	4500	2500	2300	2200			
		1.75							1800	4900						
		2.0							2200	5200						
		2.5							1500	4400						
1600	21	1.0	2000	1700	1100	2100	2700	2400	1700	4500	2700	2400	2200			
		1.75							1800	4900						
		2.0							2200	5200						
		2.5							1500	4400						

Machine roomless elevator parameter list

Rated capacity		Rated speed m/s	Car size		Net door size		Net hoistway size				
Kg	Persons		CA	CB	M	HH	AH	BH	PP	CH	
450	6	1.0	1200	1100	700	2100	2000	1600	1600	4200	
		1.75							1600	4500	
630	8	1.0	1300	1200	800	2100	2200	1700	1600	4200	
		1.75							1600	4500	
800	10	1.0	1350	1350	800	2100	2200	1800	1600	4200	
		1.75							1600	4500	
		2.0							1800	4800	
		2.5							2200	5000	
1000	13	1.0	1600	1400	900	2100	2500	1800	1600	4200	
		1.75							1600	4500	
		2.0							1800	4800	
		2.5							2200	5000	
1150	15	1.0	1700	1500	900	2100	2600	1900	1600	4200	
		1.75							1600	4500	
		2.0							1800	4800	
		2.5							2200	5000	
1350	18	1.0	1900	1600	1100	2100	2800	2150	1600	4200	
		1.75							1800	4800	
		2.0							1800	4800	
		2.5							2200	5000	
1600	21	1.0	2000	1700	1100	2100	2900	2200	1600	4400	
		1.75							1600	4500	
		2.0							1800	4800	
		2.5							2200	5000	



Safety Gear, Over Speed Governor, Hydraulic Buffer



Full Height Door Sensor



Traveling Cable



Inspection Box



Steel Wire Rope



Main & Counter Guide Shoe



Pulley



Encoder



Drum Type Geared Machine



Monarch Inverter



Haisung Geared Machine



AVS



ARD



Security Access Card



Yaskawa Inverter



Arkel Mother Board



Door Inverter



Our Assembling Plant & Warehouse



35,000 square feet
1/47 Medical Road (New), Matuail, Kadamtoli, Dhaka.



Warehouse - Stock Accessories



Installation Works

FEW REPUTED CUSTOMER LIST



- Nasir Glass Industries Ltd.
- Gazi Auto Tyres.
- Danish Condensed Milk
- Olympic Industry Ltd.
- Tropical Homes Ltd
- Electro Mart Ltd.
- Basic Builders Ltd
- Oasis Group
- Insaf Barakah Hospital
- Payra Bandar, Cordial Ltd
- H I Technology & Properties Ltd
- Renata Ltd.
- Adnan Corporation
- Krishibid Institution
- Multiplan VIP Center
- Seven Ring Developers
- Ideal Home Builders Ltd.
- Smart home builders
- Samorita hospital, Faridpur
- Land Bangla Development Ltd.
- Vision Builders
- Narayanganj Press Club
- Arbab Packaging Ltd.
- Shah Dyeing Ltd.
- Sunlight Dyeing Ltd
- Advance World Garments
- Haque Group
- Interfab Shirt Mfg. Ltd
- Bextex Limited
- Genetic Richmond
- AJ Corporation
- Lenny Apparels Ltd.(DEPZ)
- Bangladesh Villa Casting Pvt Ltd
- Sharif Pharmaceuticals Ltd.
- Online Properties Ltd.
- Modhu Milon Properties Ltd.
- Ontora Real State.
- Amin Group - Dhamrai, Savar.
- United Sugar Mills
- Fakir Knit wear Ltd
- Libas Textile ltd.
- DOM –INNO Builders Ltd
- Amicus Development
- Circle Holdings
- Ambit Builders Ltd
- Anwar landmark
- NAZ Bangla Ltd
- Meghna Bangladesh Ltd
- Fortune Shopping Mall.
- Sristy Real Estate (Shine Pukur) by
- Beximco Group
- Younusco (BD) Ltd
- CEEC (Boteswar Power Plant, Sylhet)
- Al-Banna Hospital /Present Mount, Sylhet
- National Heart Foundation, Sylhet
- HRC Housing Project, Sylhet
- Khan Jahan Tower, Comilla
- Good Heal Hospital, Noakhali.
- AD-DIN Hospital, Khulna
- Caspia Chinese, Rangpur.
- Index Plaza, Rajshahi.
- Update Diagnostic Center, Rangpur
- Mohammadia Diagnostic Center, Rangpur.
- Western Maritime Institute Ltd., Chittagong.
- Cosmopolitan Hospital, Chittagong.
- Modern Living, Chittagong.
- Friends Super Market, Chittagong.
- Golden Tower, Chittagong.
- Hope Maternity & Fistula Centre, Cox's Bazar
- Selim Traders, Khagrachari
- Chattogram City College,
- Hotel Sea Moon, Cox's Bazar
- Residential Holdings Ltd.
- Data Hub Asia (High Tech Park, Thakurgaon).

HOME LIFT SOLUTION

- Install elevators in a very small space (3 feet or less) in a 2 to 8 storey building
- Automatic or semi-automatic doors with a capacity of 2 to 6 people
- Supply and install at international quality, 100% safe, very attractive price
- Lifts can be operated at single phase 220 volts or three phase 380 volts
- There will be ARD (Automatic Rescue Device)
- No need for machine room and pit below

40 More than
Years of
experience





Elevator out of order?
forget it!!

We commit ourselves to see any and all problems attended and remedied with in twenty four hours after receipt of formal intimation, barring serious breakdowns which may require major changes. However, we carry in our inventory replacement of motor, gear, control panel, automatic doors and all other accessories.



Vertex Lifts Ltd.

Registered Address : Plot # 1/47 Medical Road, Matuail, Dhaka-Ctg Highway, Rayerbagh, (Beside Al-Faruk CNG) Kadamtali, Dhaka- 1362. Mob. : 01711696618

Corporate Office : House # 134 (Ground Floor), Lane # 05, New DOHS Mohakhali, Dhaka-1206, Mobile No. : 01792-125744, 01715-711479, 01713-388180

Tell: 8802-222294241, 222298276, 222283908, E-mail: info@vertexliftsltd.com, Web: www.vertexliftsltd.com, Facebook.com/vertexlifts.bd

CTG Office : Syed Hasan Ali Masjid Complex (1st Floor), 313, SK. Mujib Rd, (Opposit Fire Service), Dewanhat, Chittagong, Mob: 01711-164527

Sylhet Off : Mobile : 01712-091041, Khulna Off: Ground Floor, 32 Farazi Para (Dalmil More) Khulna Mob: 01726-293762

World Class Lifts, Escalators, Lift Components, Modernization & Maintenance