



# VerSun

## ELEVATORS

### CONTACT US:

Corporate Address : H-377(GF),R-28, Mohakhali DOHS, Dhaka-1206

Registered Address: 1/47, Medical Road, Matuail Dha-Ctg Highway,  
Rayerbag, (Beside Al-Faruk CNG) Kadamtali, Dhaka-1362.

E-mail: [info@vertexliftsltd.com](mailto:info@vertexliftsltd.com)

[www.vertexliftsltd.com](http://www.vertexliftsltd.com)

# About Us

VerSun Elevators — A Proud Initiative by Vertex Lifts Ltd.

At Vertex Lifts Ltd., we are proud to introduce our very own Made in Bangladesh elevator brand — VerSun Elevators. Born from over two decades of industry expertise, VerSun represents a new era of innovation, affordability, and reliability in the lift manufacturing sector of Bangladesh.

To ensure global standard quality, we have entered into a joint venture with a leading Chinese technology partner, enabling us to bring world-class engineering and advanced lift systems to the local market. This partnership has empowered us to offer cutting-edge elevators designed for safety, performance, and longevity.

While imported lifts come with high duties and taxes, VerSun Elevators provides a cost-effective alternative without compromising on quality. Being a locally manufactured brand, we make modern elevator solutions more accessible for everyone in Bangladesh.

VerSun Elevators — Smart, Safe & Affordable Vertical Mobility.





# **TORINDRIVE**

Torin Drive: Innovating Since 1985

Torin Drive is a global leader in manufacturing traction machines, PM motors, and elevator components. Since 1985, it has driven innovation in elevator technology and played a key role in drafting China's National Standard for Elevator Traction Machines.

With over 80 product specifications and 800 variants, including PM gearless, worm gear, and escalator traction machines, Torin Drive meets global standards and customer-specific needs. Over 1.5 million machines operate worldwide, reflecting unmatched reliability and performance.

Committed to quality, tailored solutions, and exceptional service, Torin Drive delivers comfort, value, and innovation beyond expectations.



**Torin Drive PM Machine**



**Latest Generation Elevator Belt Drive Machine.**



## **ZIEHL-ABEGG**

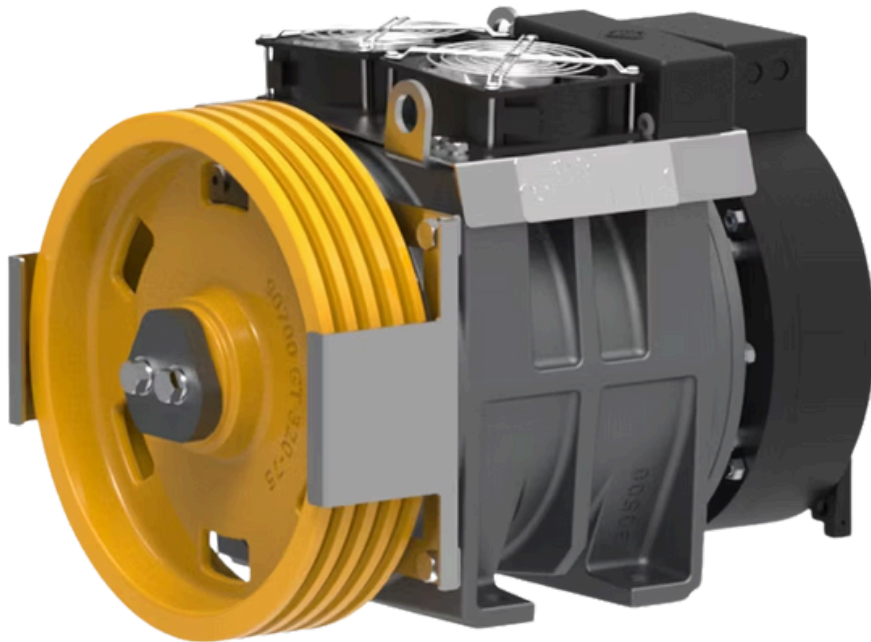
**Innovative Drive and Ventilation Technology Since 1910**

**Ziehl-Abegg is a global leader in ventilation, control, and drive technology. Founded in 1910 in Germany, the company is renowned for its pioneering work in the development of highly efficient and durable electric motors, fans, and control systems. With a commitment to innovation, sustainability, and precision engineering, Ziehl-Abegg delivers cutting-edge solutions across a range of industries including HVAC, automotive, and industrial automation.**

**Operating in over 100 countries with state-of-the-art manufacturing facilities and a strong emphasis on research and development, Ziehl-Abegg combines German engineering excellence with a global outlook. The company's signature products—such as energy-efficient EC fans and silent axial and centrifugal fans—set industry standards for performance, reliability, and environmental responsibility.**

**Ziehl-Abegg – Inspiring Innovation, Driving the Future.**





## **MONTANARI**

**FOUNDED IN 1970 IN MODENA, ITALY, MONTANARI GIULIO & C. S.R.L. IS A GLOBAL LEADER IN THE MANUFACTURING OF HIGH-QUALITY COMPONENTS FOR ELEVATORS AND ESCALATORS. WITH OVER 50 YEARS OF EXPERIENCE AND INNOVATION, MONTANARI IS RENOWNED FOR ITS PRECISION-ENGINEERED GEARED AND GEARLESS TRACTION MACHINES, AS WELL AS A WIDE RANGE OF ELEVATOR SAFETY DEVICES AND ACCESSORIES.**

**OUR PRODUCTS ARE DESIGNED TO MEET THE DEMANDS OF BOTH NEW INSTALLATIONS AND MODERNIZATION PROJECTS, OFFERING RELIABILITY, ENERGY EFFICIENCY, AND CUTTING-EDGE PERFORMANCE. WITH STATE-OF-THE-ART PRODUCTION FACILITIES IN ITALY, INDIA, AND CHINA, WE SERVE CUSTOMERS IN OVER 80 COUNTRIES, ENSURING FAST DELIVERY AND EXCEPTIONAL SUPPORT.**

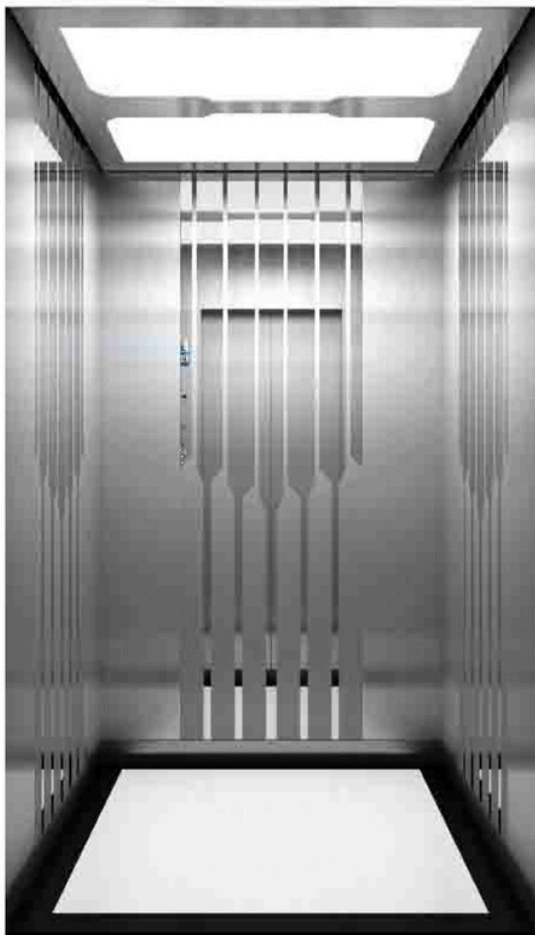
**AT MONTANARI, WE ARE COMMITTED TO EXCELLENCE IN DESIGN, SAFETY, AND CUSTOMER SATISFACTION – MAKING US A TRUSTED PARTNER IN VERTICAL TRANSPORTATION WORLDWIDE.**



**VE-01**



**VE-02**



**VE-03**



**VE-04**



**VE-05**



**VE-06**

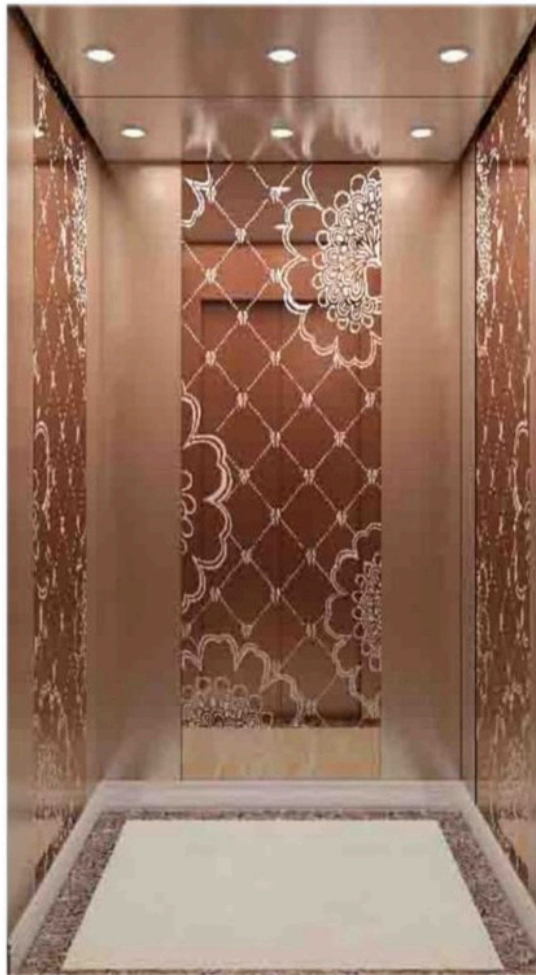


**VE-07**



**VE-08**

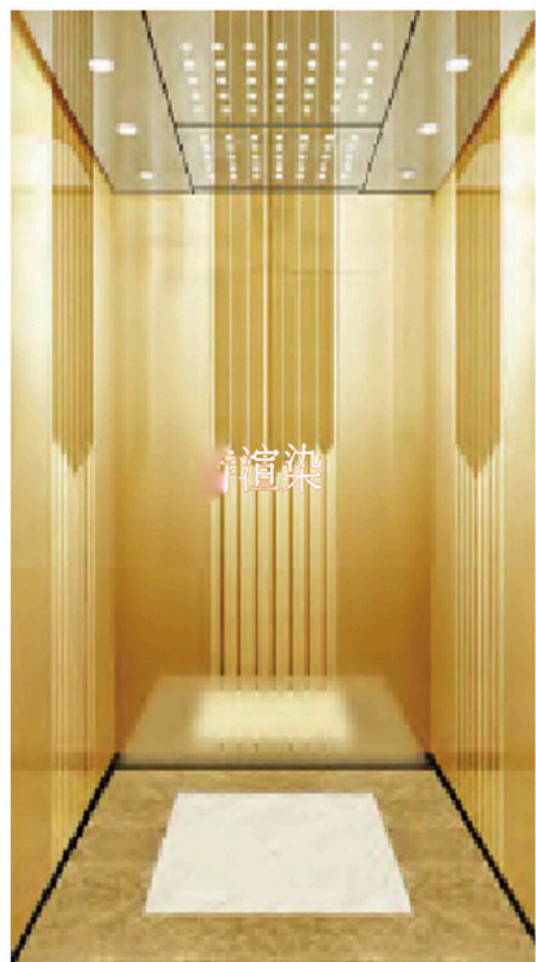




**VE-09**



**VE-10**



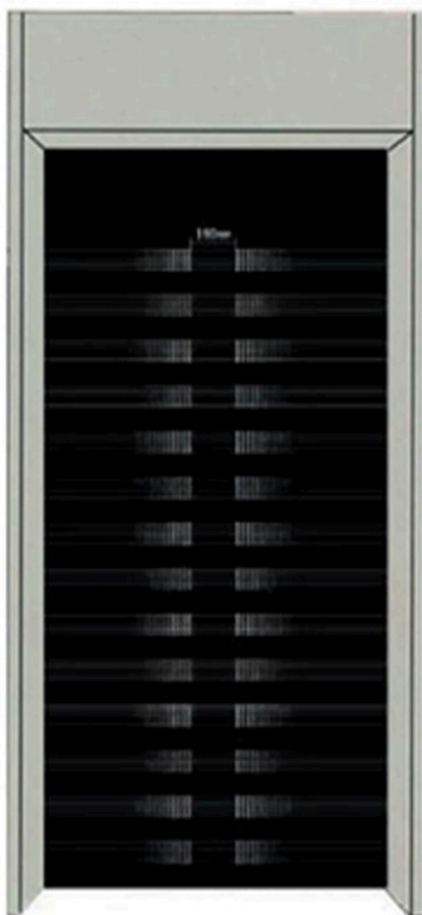
**VE-11**



**VE-12**



**VED-01**



**VED-02**



**VED-03**



**VED-04**



**VED-05**



**VED-06**





**VED-07**



**VED-08**



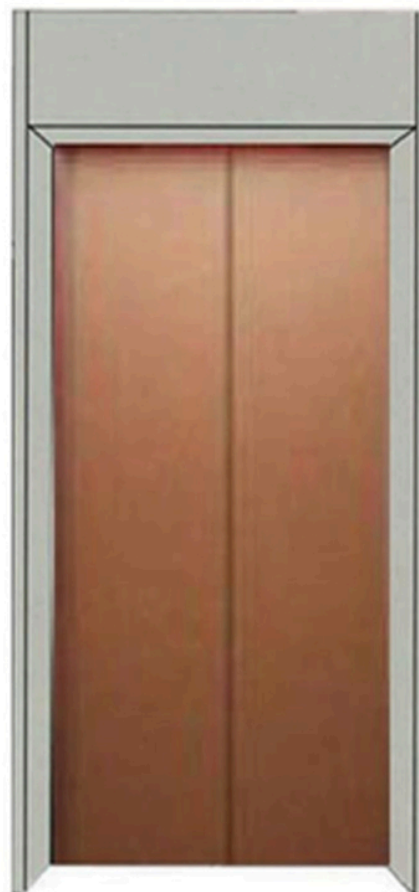
**VED-09**



**VED-10**



**VED-11**



**VED-12**

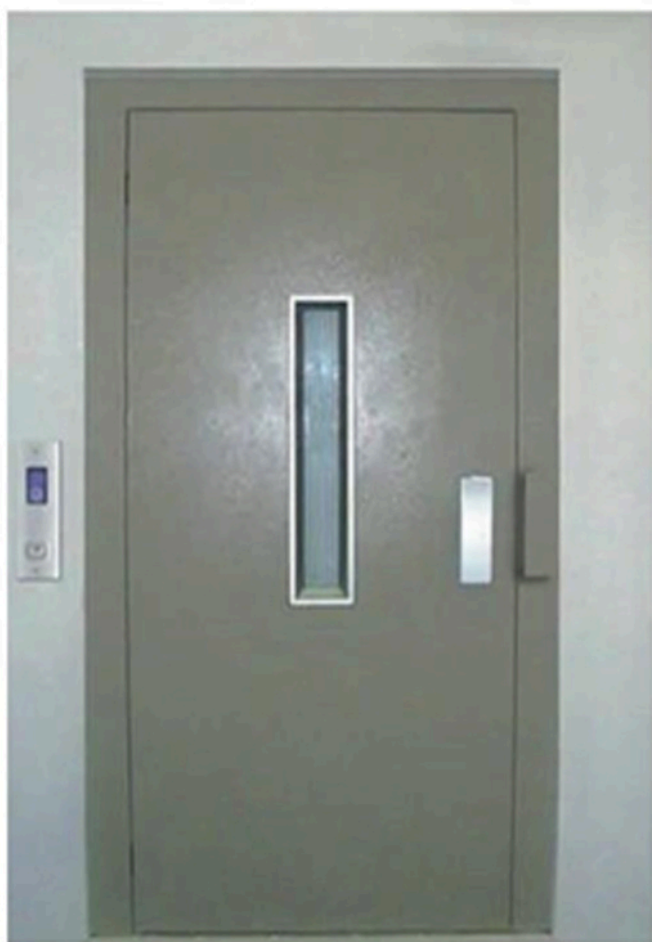




**VED-13**



**VED-14**

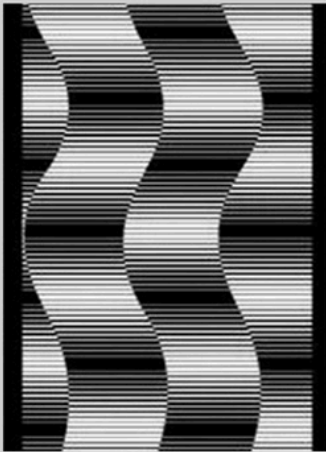


**VED-15**



**VED-16**

**Stainless Steel Etched Pattern for Cabin & Door**



**VSS-01**



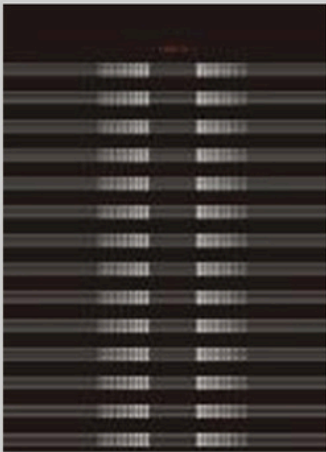
**VSS-02**



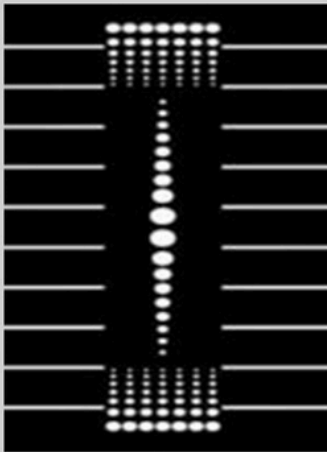
**VSS- 03**



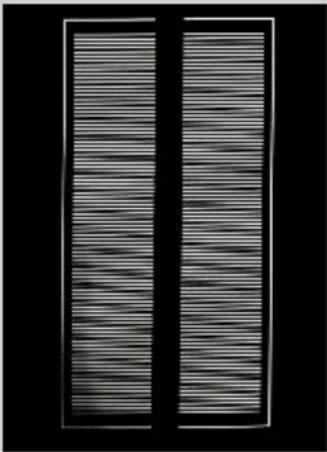
**VSS-04**



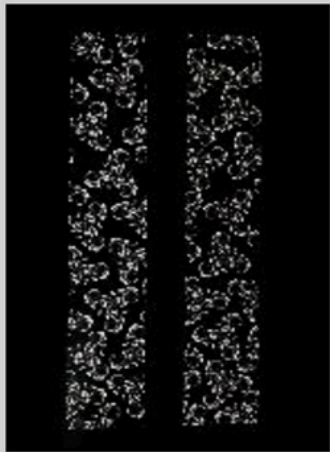
**VSS-05**



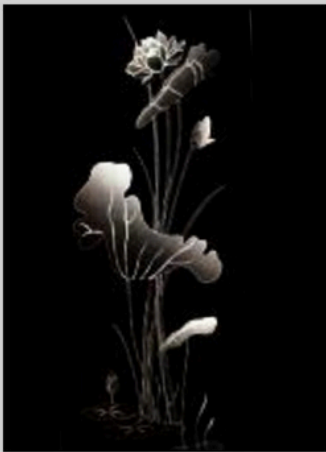
**VSS-06**



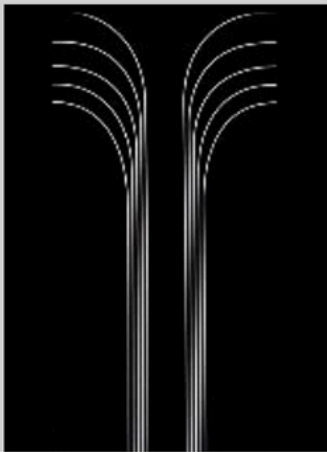
**VSS- 07**



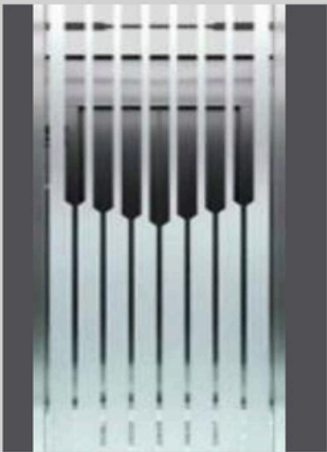
**VSS-08**



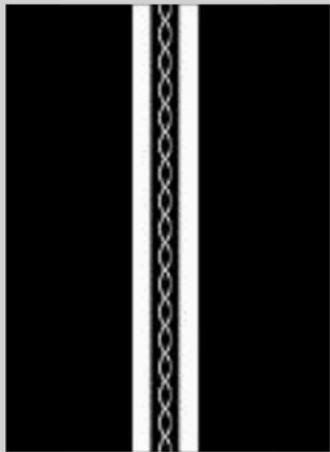
**VSS-09**



**VSS-10**



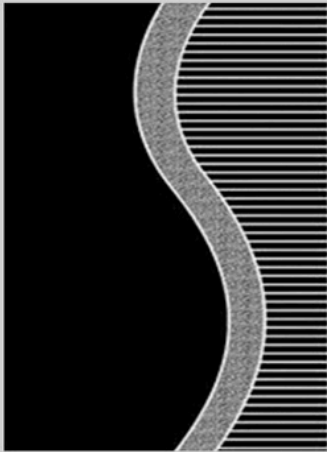
**VSS- 11**



**VSS-12**



**VSS-13**



**VSS-14**

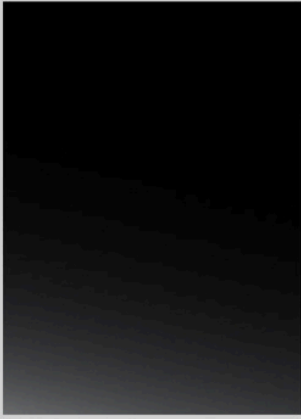


**VSS- 15**



**VSS-16**





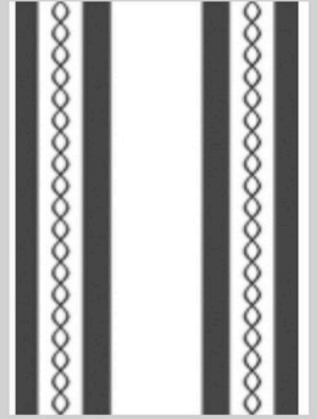
**VSS-17**



**VSS-18**



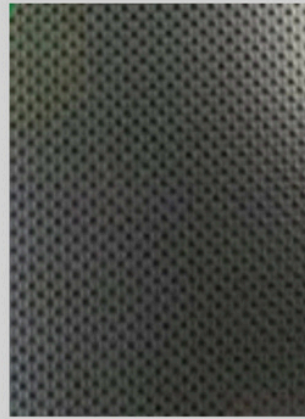
**VSS-19**



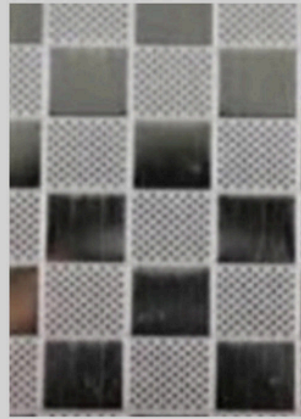
**VSS-20**



**VSS-21**



**VSS-22**



**VSS-23**



**VSS-24**





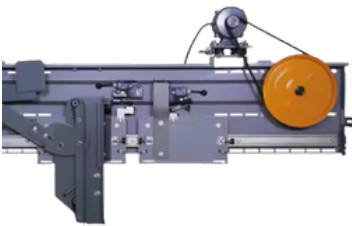
# ELEVATOR EQUIPMENT



**Original Monarch  
Elevator Controller**

## CONTROL SYSTEM

The advanced control system integrates logic, safety, drive, power supply, and other loop controls. It boasts exceptional anti-interference capabilities and a fault-tolerant design for both software and hardware, ensuring enhanced safety and preventing potential accidents.



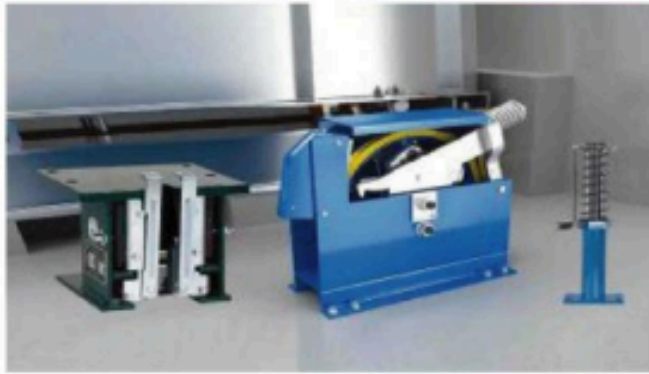
## DOOR-MOTOR SYSTEM

Lorem ipsum dolor sit amet, consectetur adipiscing elit, sed do eiusmod tempor incididunt ut labore et dolore magna aliqua.



## TRACTION MOTOR

A traction motor is an electric motor used to drive the elevator's traction system, enabling the movement of the elevator car. It provides the necessary power to lift or lower the car through a system of pulleys and ropes. Traction motors are typically used in gearless and geared elevator systems, offering efficient, reliable, and smooth operation.



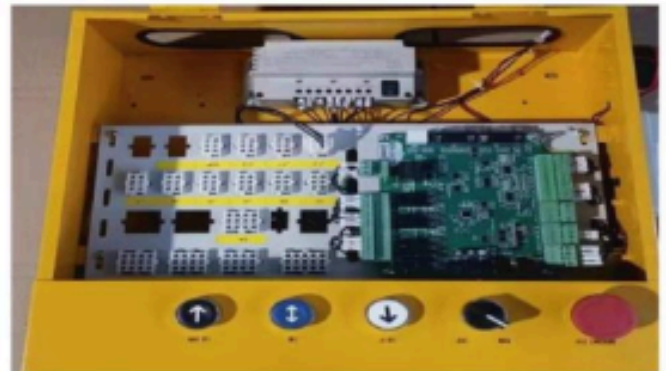
**Safety Gear, Over Speed Governor, Hydraulic Buffer**



**Full Height Door Sensor**



**Traveling Cable**



**Inspection Box**



**Steel Wire Rope**



**Main & Counter Guide Shoe**



**Pulley**



**Encoder**



Drum Type Geared Machine



Monarch Inverter



Haisung Geared Machine



AVS



ARD



Security Access Card



Yaskawa Inverter



Arkel Mother Board



Door Inverter



## Floor Display



VLL-HX01  
Dot matrix display



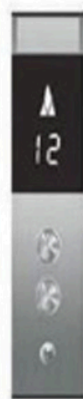
VLL-HX02  
Liquid crystal display



VLL-C01



VLL-C02



VLL-C03

(Standard)



## Display Optional



Dot matrix  
red light



White  
on black



Blue  
and white

## Display Screen



Blue Screen  
Optional



True Color  
Optional



Multi-media  
Optional

## Button Optional



VLL-A001



VLL-A002



VLL-A003

# Touch button COP with 18.5" Touch Screen Display.



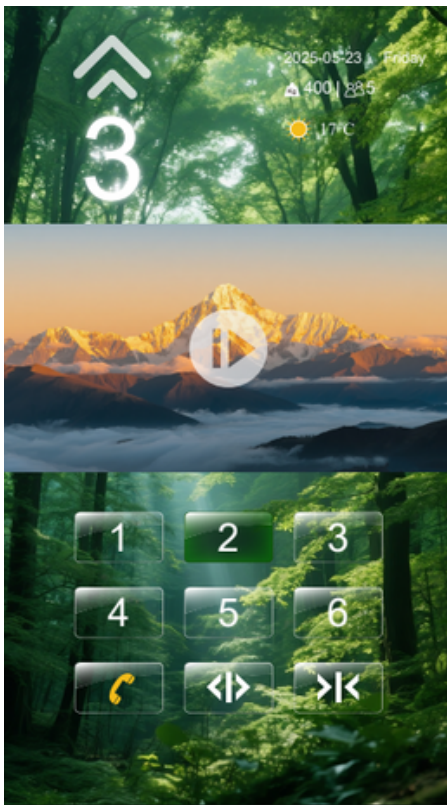
**COP-T01**



**COP-T02**



**COP-T03**



**COP-T04**



**COP-T05**



**COP-T06**



A 3D cutaway diagram of a vertical elevator shaft. The shaft is a tall, narrow, light-gray structure. At the top, a motor unit with a yellow circular component is mounted on a platform. Below this, a pulley system with multiple ropes is visible. At the bottom, an elevator car with a yellow safety railing is shown. The diagram illustrates the internal mechanical components and the path of the elevator car.

## A 3D cutaway diagram of a vertical lift system. The diagram shows a vertical shaft with a platform at the bottom. The platform has a yellow safety cage and a black motor. A blue cable runs vertically along the side of the shaft. The shaft is supported by a metal frame. The diagram is shown in a perspective view, highlighting the internal components and the overall structure of the lift system.

Reated capacity		Reated speed	Car size		Net door size		Net hoistway size				Machine room		
Kg	Persons	m/s	CA	CB	M	HH	AH	BH	PP	OH	AM	BM	MH
450	6	1.0	1200	1100	700	2100	1900	1700	1500	4200	1900	1700	2200
		1.75							1700	4500			
630	8	1.0	1300	1200	800	2100	2000	1800	1500	4200	2000	1800	2200
		1.75							1700	4500			
800	10	1.0	1350	1350	800	2100	2000	2000	1500	4200	2000	2000	2200
		1.75							1700	4500			
		2.0							1800	4900			
		2.5							2200	5000			
1000	13	1.0	1600	1400	900	2100	2200	2200	1500	4200	2200	2200	2200
		1.75							1700	4500			
		2.0							1800	4900			
		2.5							2200	5000			
1150	15	1.0	1700	1500	900	2100	2300	2150	1500	4300	2300	2150	2200
		1.75							1700	4500			
		2.0							1800	4900			
		2.5							2200	5000			
1350	18	1.0	1900	1600	1100	2100	2500	2300	1500	4300	2500	2300	2200
		1.75							1700	4500			
		2.0							1800	4900			
		2.5							2200	5200			
1600	21	1.0	2000	1700	1100	2100	2700	2400	1500	4400	2700	2400	2200
		1.75							1700	4500			
		2.0							1800	4900			
		2.5							2200	5200			

	Rated capacity		Rated speed	Car size		Net door size		Net hoistway size				
	Kg	Persons	m/s	CA	CB	M	HH	AH	BH	PP	OH	
	450	6	1.0	1200	1100	700	2100	2000	1600	1600	4200	
			1.75							1600	4500	
	630	8	1.0	1300	1200	800	2100	2200	1700	1600	4200	
			1.75							1600	4500	
	800	10	1.0	1350	1350	800	2100	2200	1800	1600	4200	
			1.75							1600	4500	
			2.0							1800	4800	
			2.5							2200	5000	
	1000	13	1.0	1600	1400	900	2100	2500	1800	1600	4200	
			1.75							1600	4500	
			2.0							1800	4800	
			2.5							2200	5000	
	1150	15	1.0	1700	1500	900	2100	2600	1900	1600	4300	
			1.75							1600	4500	
			2.0							1800	4800	
			2.5							2200	5000	
	1350	18	1.0	1900	1600	1100	2100	2800	2150	1600	4300	
			1.75							1600	4500	
			2.0							1800	4800	
			2.5							2200	5000	
	1600	21	1.0	2000	1700	1100	2100	2900	2250	1600	4400	
			1.75							1600	4500	
			2.0							1800	4800	
			2.5							2200	5000	



SCISSOR TYPE CAR LIFT



RAIL TYPE CARGO LIFT



CARGO LIFT



OBSERVATION ELEVATOR CABIN



VLL-025



VLL-026



VLL-027



35,000 square feet  
1/47 Medical Road (New), Matuail, Kadamtoli, Dhaka.

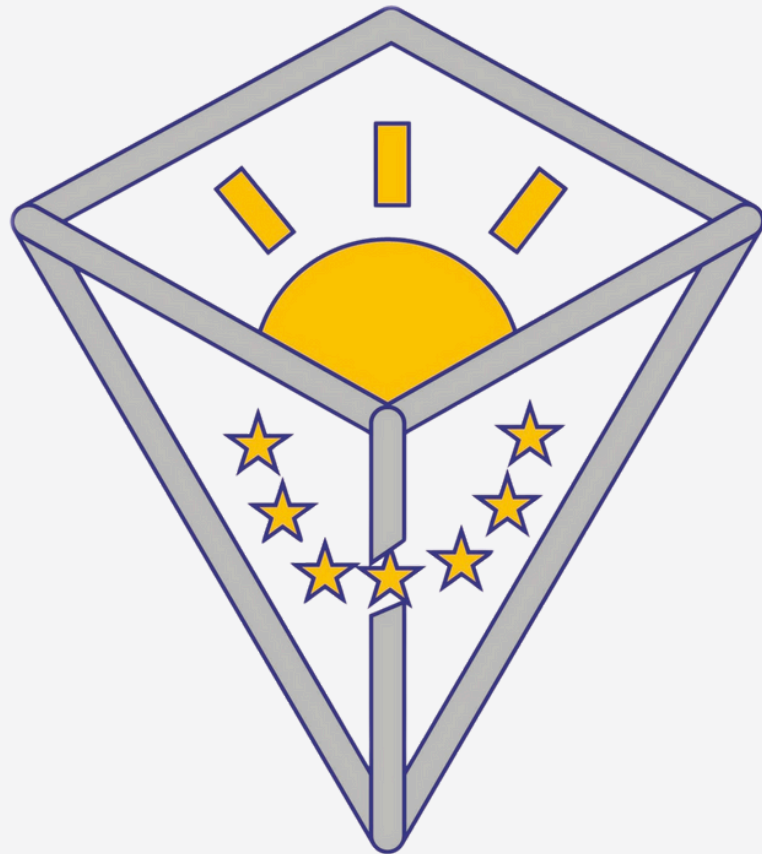


**Warehouse - Stock Accessories**



**Installation Works**





# **VerSun**

## **Elevators**

### **CONTACT US:**

**Corporate Address : H-377(GF),R-28, Mohakhali DOHS, Dhaka-1206**

**Registered Address: 1/47, Medical Road, Matuail Dha-Ctg Highway,  
Rayerbag, (Beside Al-Faruk CNG) Kadamtoli, Dhaka-1362.**

**E-mail:info@vertexliftsltd.com**

**www.vertexliftsltd.com**

**01711-540871, 01792-125744, 01713-388180, 01340040020, 01401401499**